

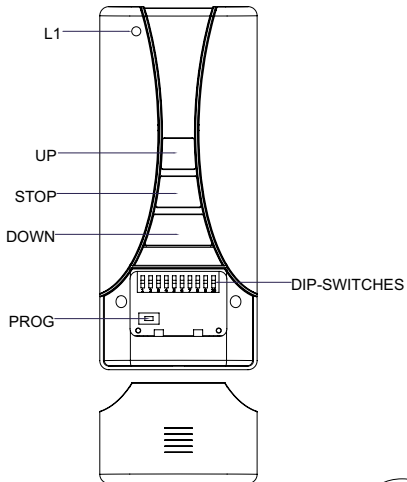
# MOWIN®

## R-CONTROL

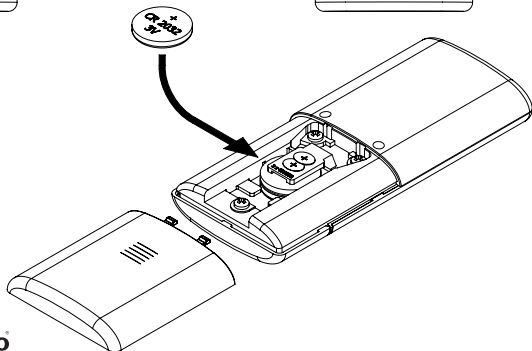
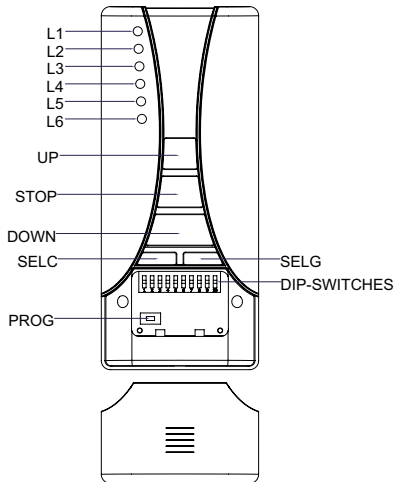
ISTRUCTION  
MANUAL

 **Comunello®**

## R1-CONTROL



## R6-CONTROL



# 1. GENERAL INFORMATION

Please read carefully and follow the instructions detailed in this manual. Keep the manual for use and future maintenance. Pay attention to the configuration of the DIP-switches, to the data concerning the performance (see "Technical Data").

## 2. TABLE OF TECHNICAL DATA AND MARK

The CE mark certifies that the transmitter conforms to the essential health and safety requirements laid down by European product directives. The CE mark can be identified by the relevant adhesive label applied to the outside of the product, on which are shown some of the data shown in the following table:

	<b>R1-CONTROL</b>	<b>R6-CONTROL</b>
	MX00 AT 01N 0G 00	MX00 AT 02N 0G 00
Power Supply	2 x Lithium 3V (CR2032 230mAh)	2 x Lithium 3V (CR2032 230mAh)
Frequency	434,15 MHz	434,15 MHz
Channels	1	6
Range in open field	300 mt	300 mt
Max . absorption	← 25mA	← 25mA
Dimensions	120x52x19 mm	120x52x19 mm
Weight	40g	40g

## 3. TRASMITTER R1-CONTROL

All the transmitters R1-CONTROL allow controlling 1 automation or group of automations for awnings and shutters.

### 3.1 FUNCTIONING OF THE BUTTONS UP, DOWN AND STOP

UP	Activates the automation GOING UP
DOWN	Activates the automation GOING DOWN
STOP	It stops the automation

### 3.2 FUNCTIONING OF THE BUTTON PROG AND DIP-SWITCHES

The button PROG and the DIPSWITCHES program the functions of the control units controlled by the transmitters R1-CONTROL. Read carefully the section "PROGRAMMING OF THE FUNCTIONS BY R-CONTROL TRANSMITTERS" in the handbook of the control unit or in the one of the tubular motor with integrated electronic card.

## 4. TRASMITTER R6-CONTROL

### 4.1 Functioning of the buttons UP, DOWN and STOP

UP	Activates the automation GOING UP
DOWN	Activates the automation GOING DOWN
STOP	it stops the automation

### 4.2 Functioning of the button SELC

By this button it is possible to select the channel to be used for the radio transmission.

1. Press button SELC until selected the desired channel: the corresponding led is on for some seconds
  2. Press one of the buttons UP, DOWN or STOP to transmit the control
- To select all the channels at the same time press several times the button SELC until all the leds are on. To display the channel set, press once the button SELC.

### 4.3 Functioning of the button SELG

By this button it is possible to program and select the GROUPS of channels to be used for the radio transmission. It is possible to store up to 8 groups of channels; stored the eighth, a new group will replace the first one.

1. Press the button SELC until selected the first channel to link to the group
2. Press the button SELG: the led linked to the selected channel starts blinking
3. Press the button SELC until selected the second channel to link
4. Press the button SELG: the led linked to the selected channel starts blinking
5. Repeat the procedure for all the desired channels: the leds linked are on till the end of the procedure
6. Once selected all the channels wait for the leds to switch off: the group has been stored and it is possible to display it by pressing the button SELG

When the groups are more than one, to select the desired group proceed as follows:

1. Press the button SELG several times until selected the desired group:  
the leds linked to the channels are on for some minutes
2. Press one of the buttons UP, DOWN or STOP to transmit the control

To delete all the groups stored proceed as follows:

1. Press and release the button SELG: the last group used is displayed by the leds.
2. Before all the leds switch off, press and keep pressed the button SELC and at the same time press the button SELG
3. Keep pressed both the buttons for some seconds until the leds switch off: the groups have been deleted

#### **4.4 Functioning of the button PROG and DIP-SWITCHES**

The button PROG and the DIPSWITCHES program the functions of the control units controlled by the transmitters R-CONTROL. Read carefully the section "PROGRAMMING OF THE FUNCTIONS BY R-CONTROL TRANSMITTERS" in the handbook of the control unit or in the one of the tubular motor with integrated electronic card.

## **5. REPLACING BATTERY**

Replace the battery when the radio range power decrease or the led light intensity becomes too feeble. Open the door of the battery compartment and replace the two batteries respecting the polarity shown by picture 2.

## **6. PROTECTION OF THE ENVIRONMENT**

Batteries contain pollutant elements, must be disposed of in accordance with environmental regulations (Fratelli Comunello S.p.A. advise to use a specific disposal system). Transmitter contains pollutant elements too; follow the same procedure to dispose.

Should the batteries lose electrolytic substances, please replace them immediately avoiding with care any contact with such substances.

## 7. GUARANTEE

The manufacturer guarantees the correct operation of the transmitter.

The manufacturer undertakes to replace parts which are faulty due to manufacturing faults or defects, according to that laid down by Article 1490 of the Italian Civil Code. The guarantee covers the products or individual parts for a period of 36 months from date of purchase.

This is valid if the purchaser is able to show the purchase receipt and has satisfied the agreed conditions of payment.

The guarantee of correct operation of the transmitter issued by the manufacturer means that the manufacturer undertakes to repair or replace free of charge, in the shortest time possible, those parts that have become faulty due to defects in construction or material defects during the period of the guarantee.

The purchaser cannot claim the right to any compensation for any damages, direct or indirect, or to other costs.

The guarantee does not cover parts which are fragile or exposed to wear and tear, or to corrosive process agents, etc.

The manufacturer cannot be held responsible for the guarantee if the product has been mishandled, disassembled, had its label removed, or exhibits evidence of impact or other factors.

Attempts at repair by third parties who have not been authorised by the manufacturer will cause the guarantee to become invalid.

## 8. DIRECTIVE CONFORMITY

The R-CONTROL transmitters are in conformity with the provisions of the following EC directive(s), and with the standard referenced here below:

EN 60950, EN 301 489-1, EN 301 489-3, EN 300 220-2

Rosà, 10/01/2011

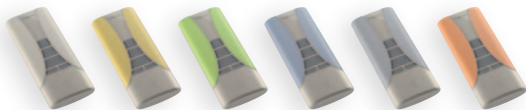
  
Fratelli Comunello S.p.A. legal representative

**Luca Comunello**

**MOWIN**<sup>®</sup>

R-CONTROL

code: 91300105 / VS. 00 / Print 02-2011



 **Comunello**<sup>®</sup>

Fratelli Comunello S.p.A.,  
Via Cassola, 64 - 36027 Rosà (Vicenza), Italy.  
Tel. +39-0424.585.111 - Fax +39-0424.533.417  
[www.comunello.com/mowin](http://www.comunello.com/mowin)